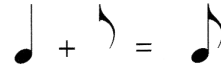


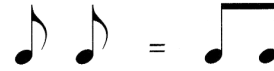
# Eighth Note

- ● Whole Note  
 - ◐ Half Note  
 - ◑ Quarter Note  
 - ◒ Eighth Note

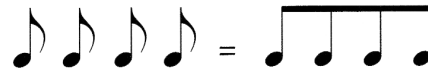
Adding a **Flag** to a quarter note creates an **Eighth Note**. The flag flies to the right of the stem.



Two eighth notes can be connected with a **Beam**.



Four eighth notes can also be connected with a **Beam**.



While the stem of the eighth note follows the same rules as quarter notes, the flag always flies to the right of the stem.



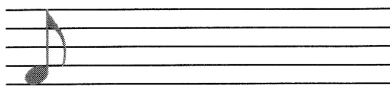
With successive eighth notes, the beam joins the stems. Notice with notes of the same pitch, the beam is straight. With ascending or descending notes, the beam follows the shape of the music.



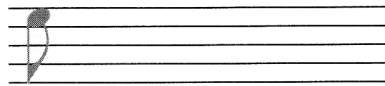
## STUDENT ASSIGNMENT

1. Complete the following exercises in drawing eighth notes.

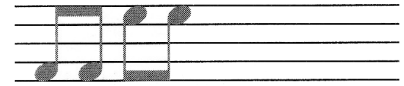
a) Trace the single eighth note and draw four more.



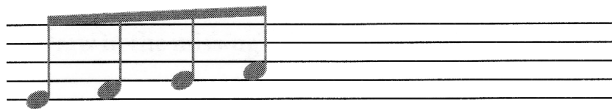
b) Trace the single eighth note and draw four more.



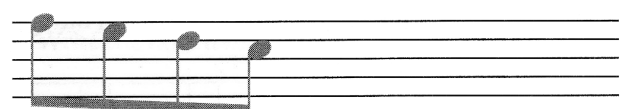
c) Trace both pairs of eighth notes and draw two more pairs.



d) Trace the set of four ascending eighth notes and draw another set.



e) Trace the set of four descending eighth notes and draw another set.



2. Add each set of note values to calculate the total number of beats. (The quarter note gets one beat.)

a) = \_\_\_

b) = \_\_\_

c) = \_\_\_

d) = \_\_\_