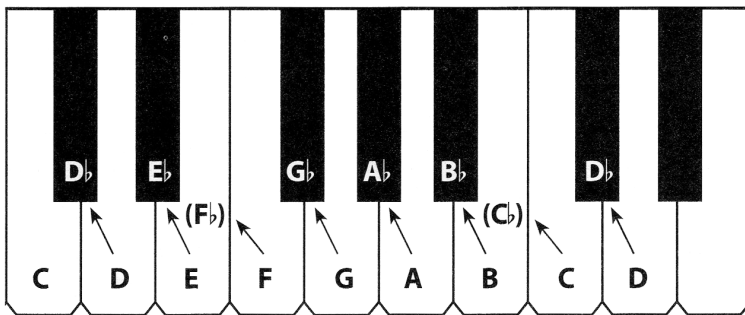
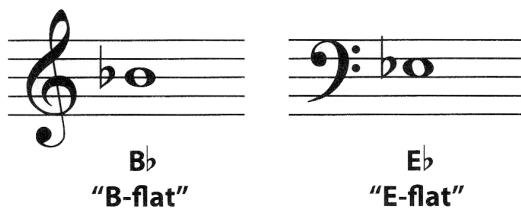


A **Flat** ( $\flat$ ) lowers a pitch by a half step (one key to the left on the piano keyboard).

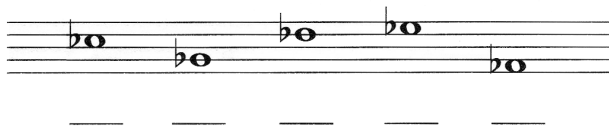
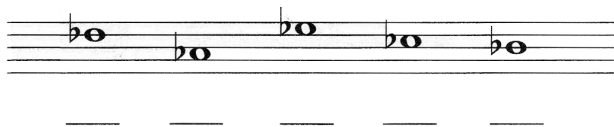


When notated, the flat sign always comes before the note. When spoken or written with letter names, the word “flat” comes after the note name.

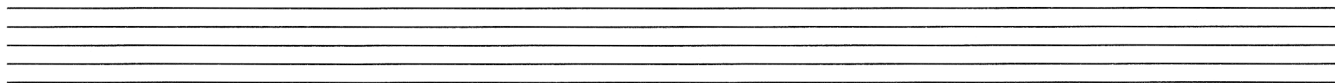


## STUDENT ASSIGNMENT

1. Write the note name in the blank provided below each note.



2. Draw a clef and then notate each indicated pitch as a half note on the staff below. (Check your stem directions.)



$A\flat$

$D\flat$

$B\flat$

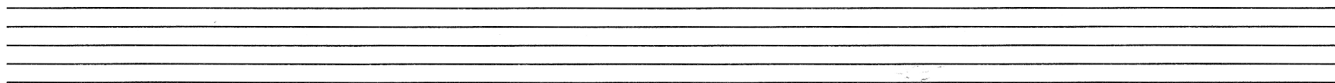
$E\flat$

$C\flat$

$F\flat$

$G\flat$

3. Draw a clef and then notate each indicated pitch as a quarter note on the staff below. (Check your stem directions.)



$F\flat$

$A\flat$

$E\flat$

$C\flat$

$D\flat$

$B\flat$

$G\flat$