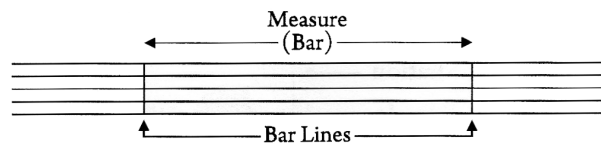
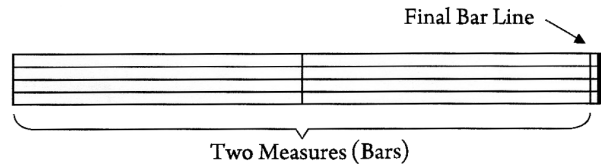


Music on the staff is divided using **Bar Lines**. The space between two bar lines is called a **Measure** or a **Bar**.

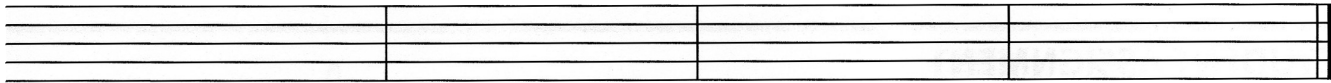


The end of a piece of music is indicated by a **Final Bar Line**. It is made up of one thin and one thick bar line. This is sometimes called a final double bar line.



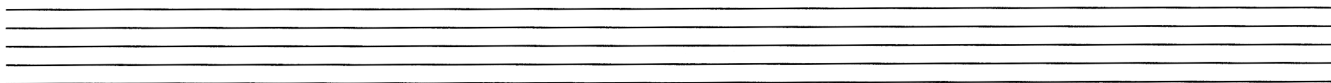
STUDENT ASSIGNMENT

1. Follow the instructions below to complete this exercise.



- a) Draw a clef at the beginning of the staff above.
- b) How many measures are there in this staff? _____
- c) How many bar lines are there in this staff, including the final bar line? _____
- d) Draw two half notes on C in the 1st and 3rd measures.
- e) Draw four quarter notes on G in the 2nd and 4th measures.
- f) Circle the final bar line.

2. Follow the instructions below to complete this exercise.



- a) Draw a clef at the beginning of the staff above.
- b) Divide the staff into four measures. Include a final bar line at the end.
- c) In each measure, draw four different quarter note pitches. (Double check the stem direction!)
- d) Write the letter name of each pitch below the staff.
- e) Draw a circle around the highest pitch you wrote.
- f) Draw a square around the lowest pitch you wrote.